



SLHC-PP

DELIVERABLE REPORT

EU DELIVERABLE: 3.2.2

Document identifier:	SLHC-PP-3.2.2-1093336-v1
Contractual Date of Delivery to the EC	End of Month 32 (Nov. 2010)
Actual Date of Delivery to the EC	18/4/2011
Document date:	10/4/2011
Deliverable Title:	Schedule for the upgraded detector parts and for the S-ATLAS installation
Work package:	WP3: Coordination for the S-ATLAS experiment implementation
Lead Beneficiary:	CERN
Authors:	S.Stapnes
Document status:	Released
Document link:	https://edms.cern.ch/document/1093336/1



DELIVERABLE REPORT

Doc. Identifier:
SLHC-PP-3.2.2-1093336-v1

Date: 10/4/2011

History of Changes

Version	Date	Comment	Authors
1.0	27.3.2011	First version created for comments	Steinar Stapnes
1.1	4.4.2011	Released version	Steinar Stapnes

Copyright notice:

Copyright © Members of the SLHC-PP Collaboration, 2009.

For more information on SLHC-PP, its partners and contributors please see www.cern.ch/SLHC-PP/

The Preparatory Phase of the Large Hadron Collider upgrade (SLHC-PP) is a project co-funded by the European Commission in its 7th Framework Programme under the Grant Agreement n° 212114. SLHC-PP began in April 2008 and will run for 3 years.

The information contained in this document reflects only the author's views and the Community is not liable for any use that may be made of the information contained therein.



DELIVERABLE REPORT

Doc. Identifier:
SLHC-PP-3.2.2-1093336-v1

Date: 10/4/2011

TABLE OF CONTENTS

EXECUTIVE SUMMARY	4
SCHEDULE.....	5
CONCLUSIONS.....	7



DELIVERABLE REPORT

Doc. Identifier:
SLHC-PP-3.2.2-1093336-v1

Date: 10/4/2011

EXECUTIVE SUMMARY

The ATLAS upgrade schedule has been made for the overall upgrade, and a more detailed one for the first upgrade phase towards 2013-14. Both schedules need to be revised taking into account the change in LHC running schedule that was decided in February 2011, extending the present run period by one year until 2013. This has two consequences, the PIXEL changes originally foreseen for 2015-16 has been moved forward to be installed in 2013-14, and the major ID upgrade foreseen 2019-20 will move backwards to 2020-21.

SCHEDULE

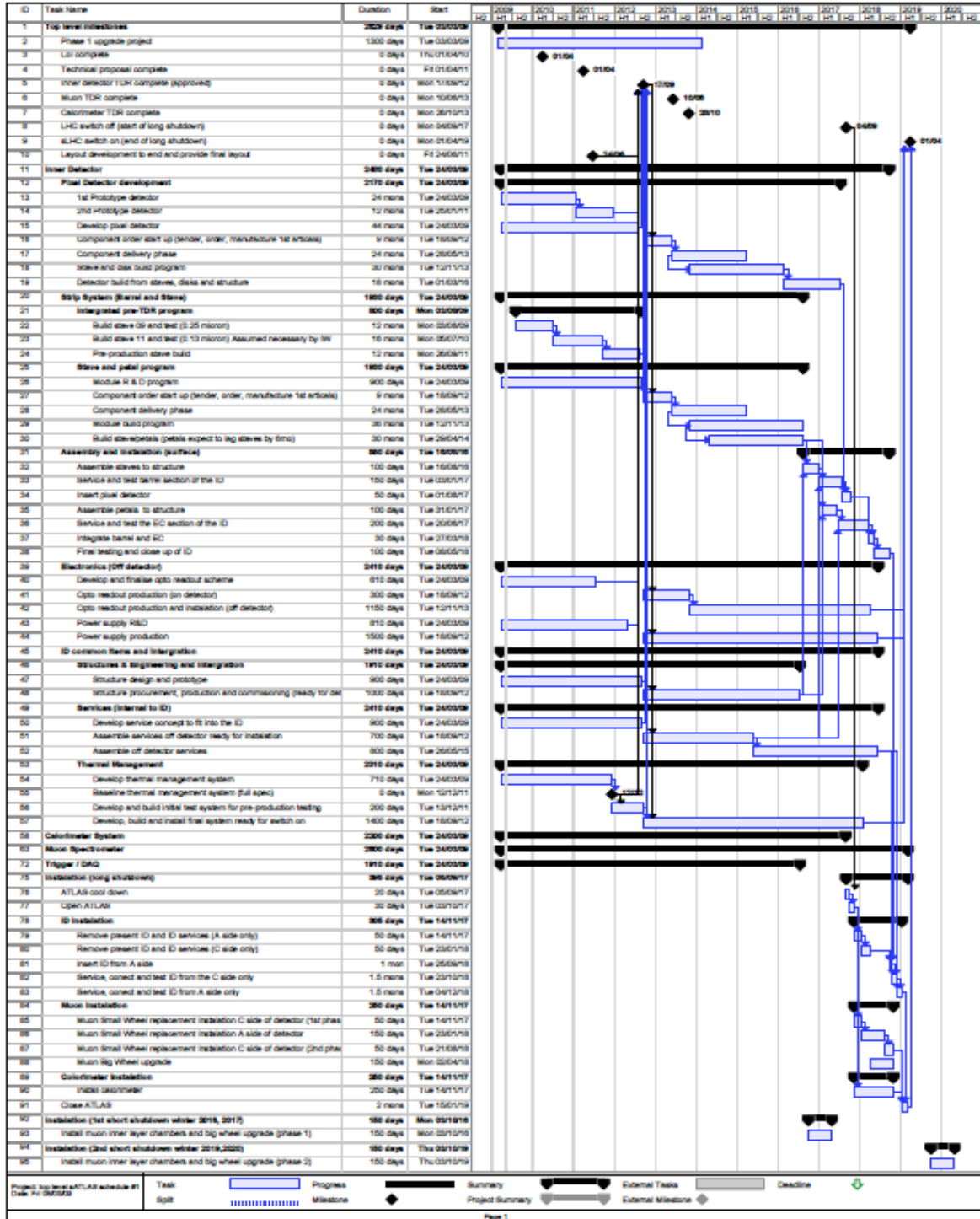


Figure 1: The top-level schedule for the upgrade is shown above, and can also be found at: <https://edms.cern.ch/document/1012819/1>. The installation of the items, and underlying assumption about shutdowns are being changed and this will make it necessary to update this schedule in the near future.

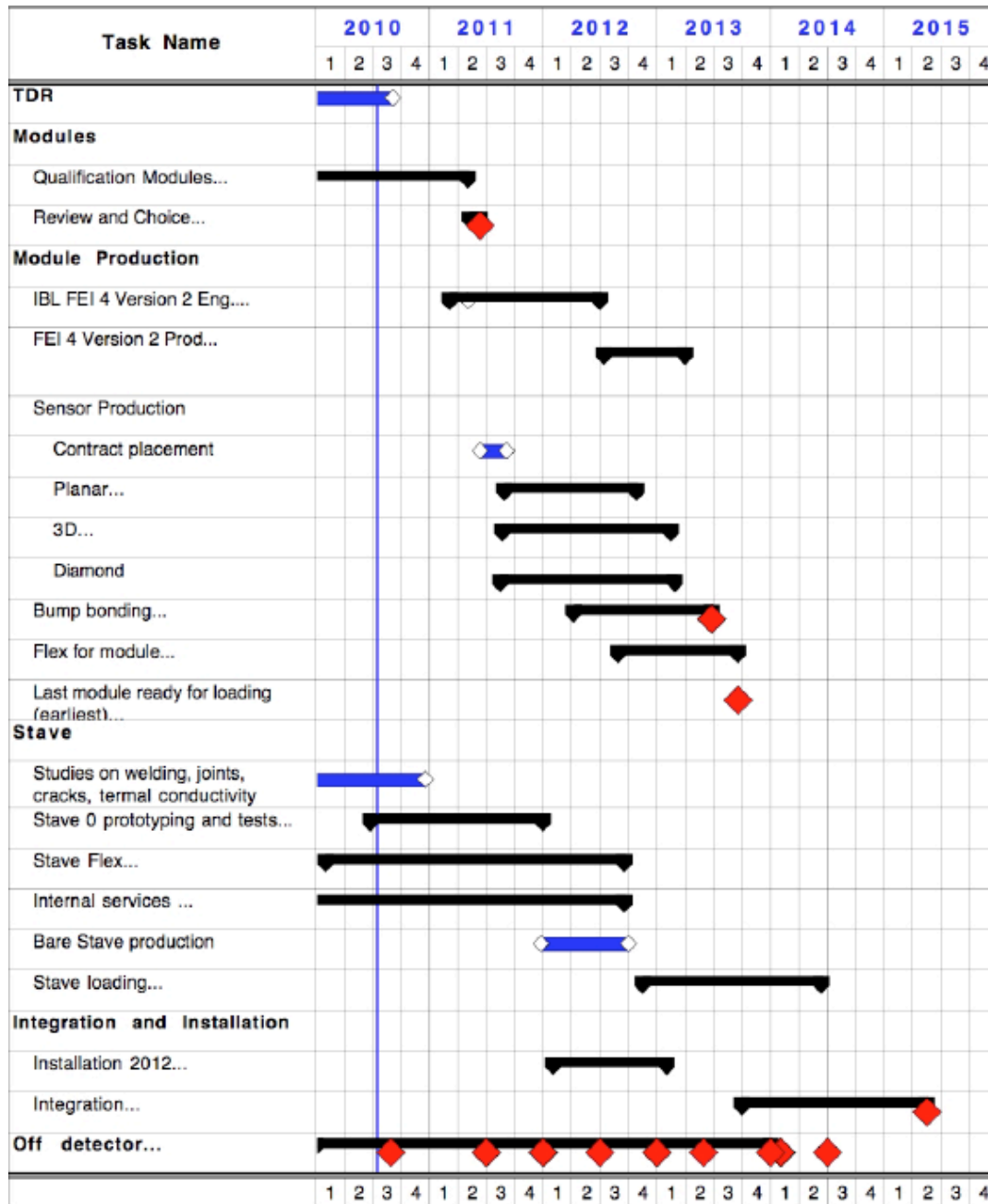


Figure 2: The top level schedule for the Insertable B-layer is shown above from the IBL Technical Design Report: cdsweb.cern.ch/record/1246027/files/ATL-INDET-SLIDE-2010-025.pdf. Due to a recent change in the LHC run schedule also in this case the actual installation period is likely to change, without changing the main lines in the schedule.



DELIVERABLE REPORT

Doc. Identifier:
SLHC-PP-3.2.2-1093336-v1

Date: 10/4/2011

CONCLUSIONS

The schedules for the short term and long term upgrades of the ATLAS detector are available. The actual showdown periods will change with time as LHC is being operated and more experience is being built up, and these schedules will be kept updated to adapt to these changes. It is likely that the actual installation of hardware will be in three shutdowns, nominally foreseen for 2013-14, 2017-18, 2020-21.