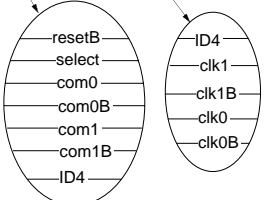
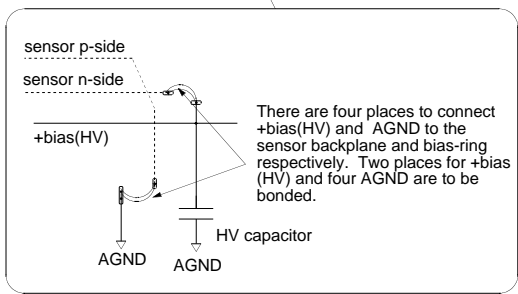
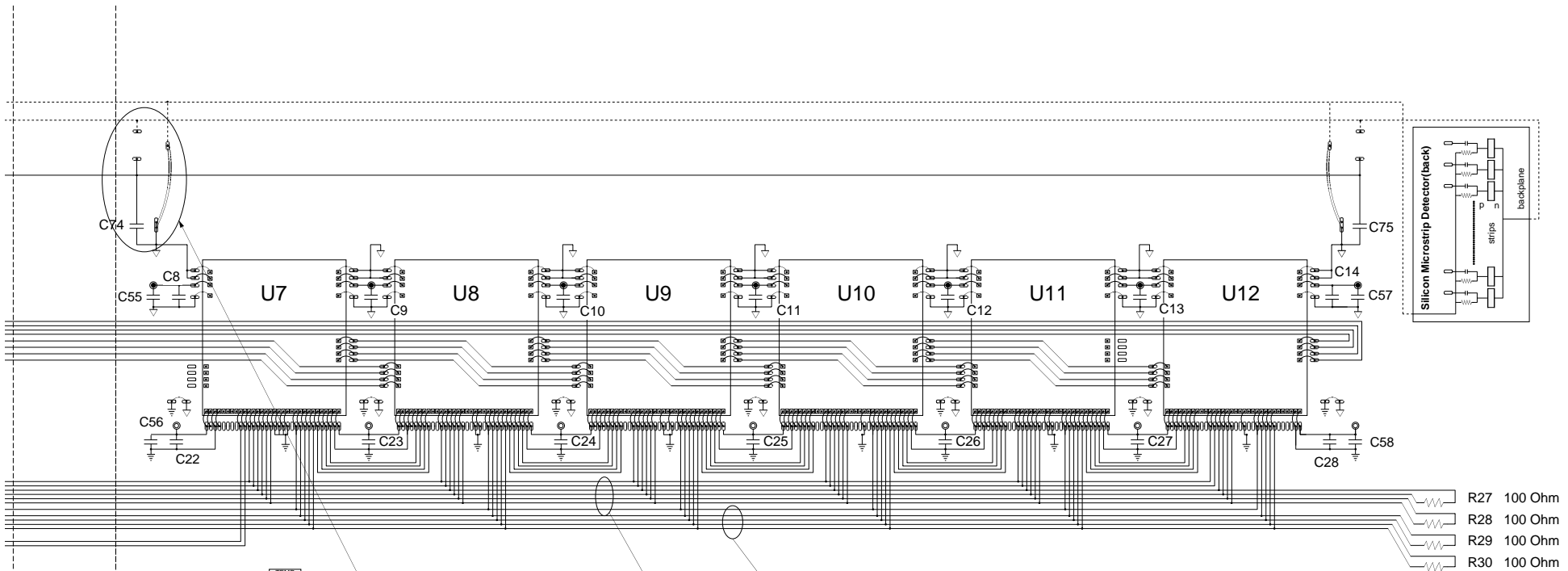


1997.9.5 T. Kondo (KEK)
1997.9.6 V1
1997.10.10 V2
1998.1.25 V3
1998.4.10 V4
1998.4.12 V5
1998.5.9 V6 ← Melbourne
1998.5.19 V7 ← Unno
1999.6.29 V8
1999.7.29 V9a
1999.12.1 V8b
1999.12.28 V8c
2000.1.15 V9d
2000.2.4 V8e
2000.2.9 V8f (S → 5.1 kohm)
2000.3.18 Helvetica font
2000.5.11 mistakes corrected
2000.7.12 new version for ABCD3T

Circuit Diagram of Barrel Cu/Polyimide Hybrid for ABCD3T chips (ATLAS/K4ABCD3/2K09)



Parts list			
part notation	total number	dimensions (mm)	specifications and part No.
U1 ~ U12	12	6.55 x 8.40	ABCD3T chip (version 1.1)
C1 ~ C28	22	1.6 x 0.8	100 nF, 25 V, Ceramic capacitor, Murata GRM39-X7R-104-K-25
C51 ~ C58	8	3.2 x 1.6	330 nF, 25 V, Ceramic capacitor, Murata GRM42-X7R-334-K-25
C71 ~ C75	5	3.2 x 1.6	10 nF, 630 V, Ceramic capacitor, Murata GHM1530-B-103-K-630
R27 ~ R30	4	1.6 x 0.8	100 ohm (termination of com and clock lines)
R33, R34	2	1.6 x 0.8	5.1 k ohm, resistor
R35	1	1.6 x 0.8	1 k ohm, resistor
R36	1	1.6 x 0.8	jumpering wire
TM1, TM101	2	1.6 x 0.8	10k thermistors, Semitec 103KT1608-1P
CON	1	1.27mm pitch	2 row x 18 pins connector, Samtec SFMC-140-L3-S-D