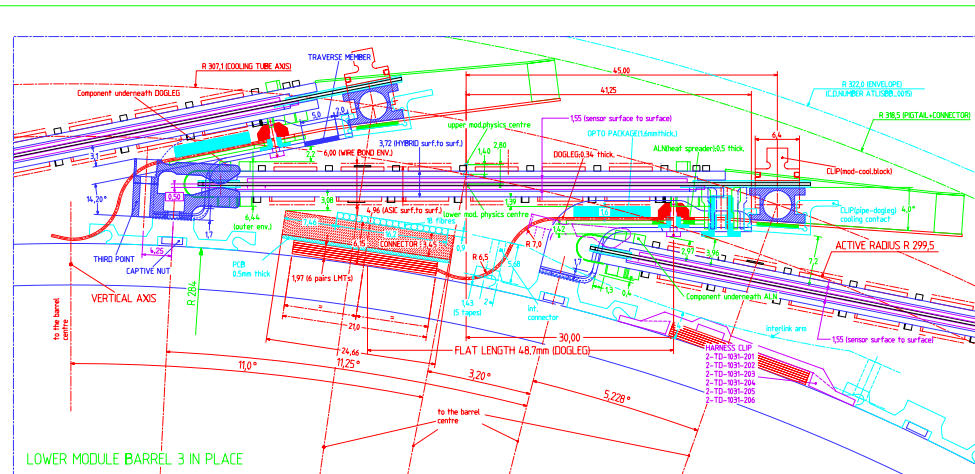
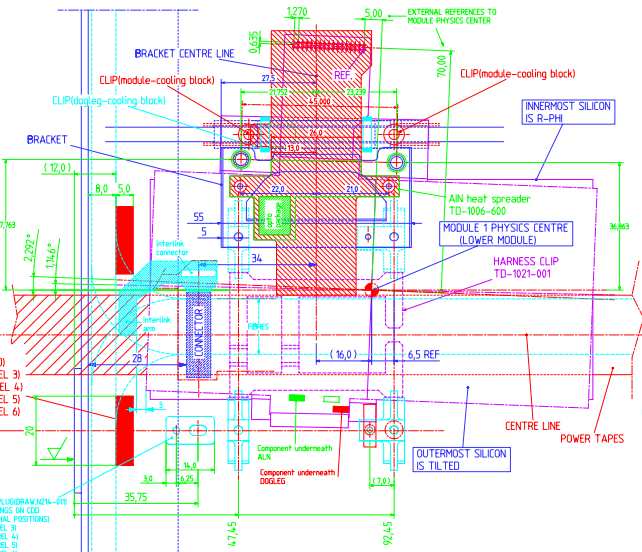
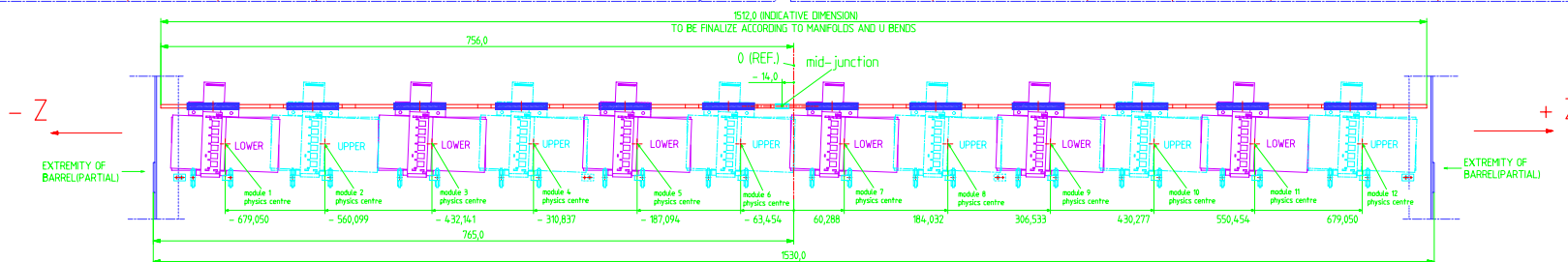


UPPER MODULE BARREL 3 IN PLACE

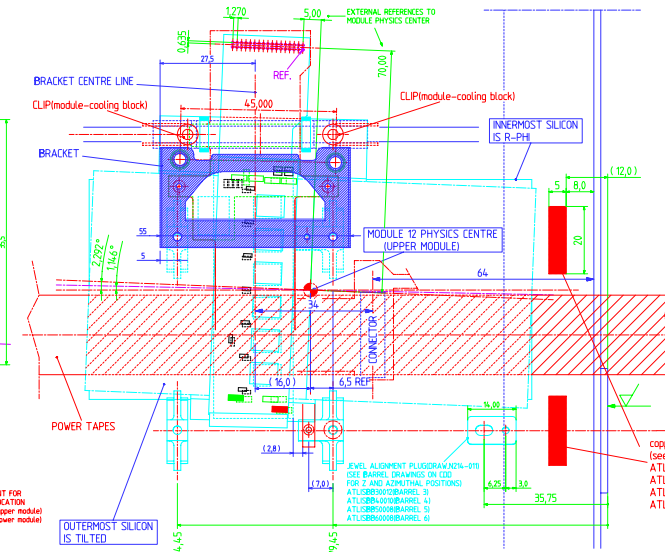


LOWER MODULE BARREL 3 IN PLACE



- Z SIDE TOP VIEW(dogleg highlighted)

THIRD MOUNTING POINT(4:1 SCALE)



+ Z SIDE TOP VIEW(bracket highlighted)

MODULE SEPARATION : 2.8mm
 TILT ANGLE: 11°
 ACTIVE RADIUS: 299.5mm

(1) HARNESS AT END OF BARREL

HEIGHT OF THE STACK: 6.15mm
 - 6 pairs LMTs = 1.97mm
 - interface PCB = 0.5mm
 - Connector = 3.45mm
 - width of connector = 24.662mm
 - solder = 0.03mm
 - strap effect = 0.2mm

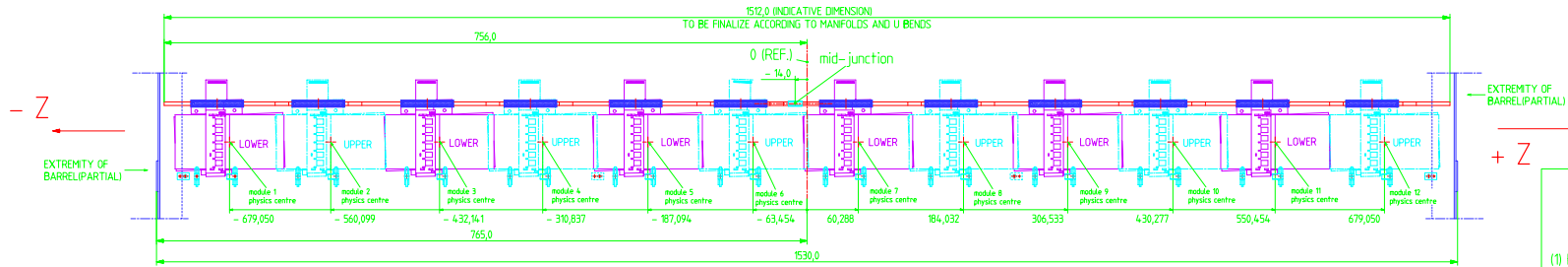
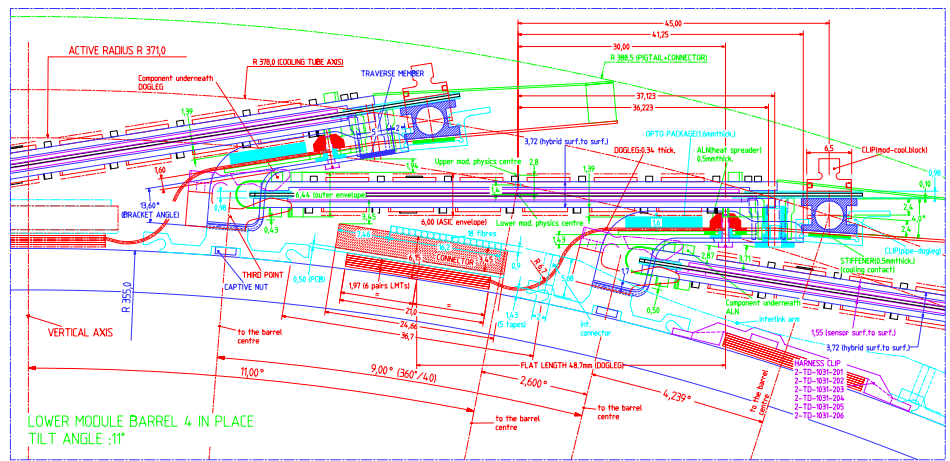
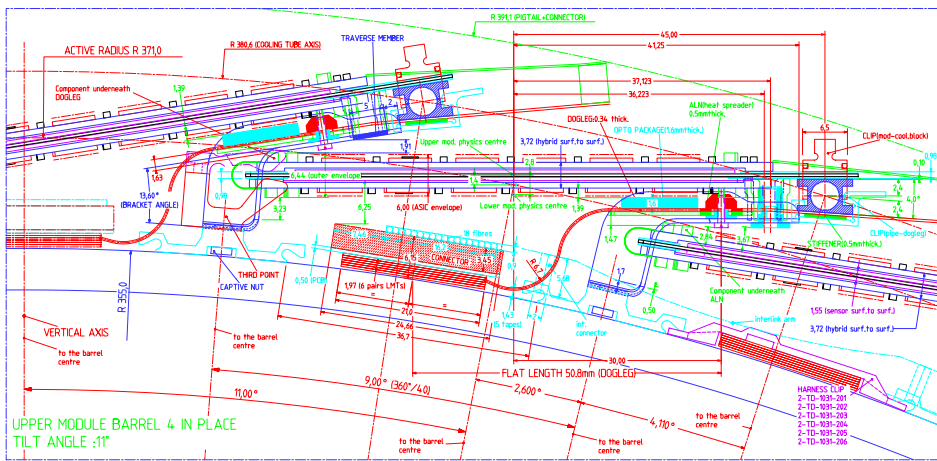
(2) OPTO-PACKAGE UNDER MODULE

- ALN = 0.5mm
 - Thermally conductive glue = 0.1mm
 - Dogleg (region Opto-package) = 0.34mm
 - Opto-package and chip cover on dogleg including glue: 1.6mm

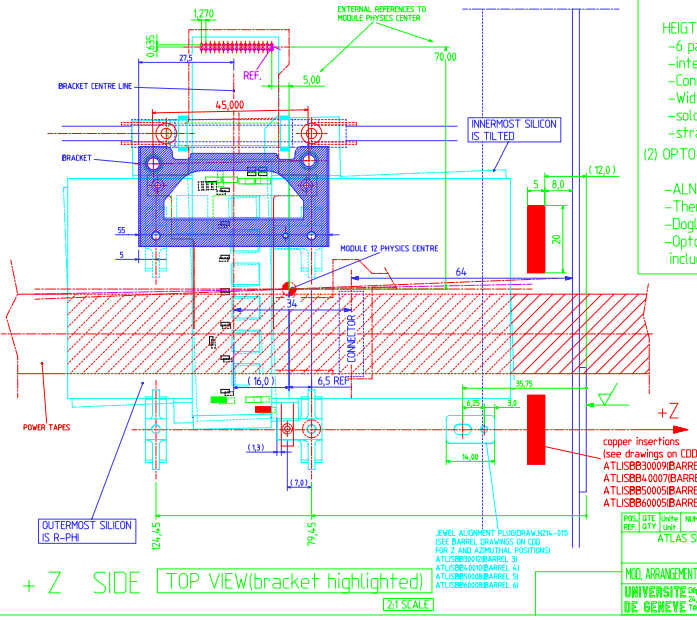
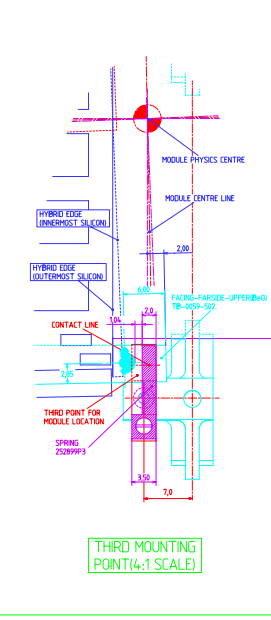
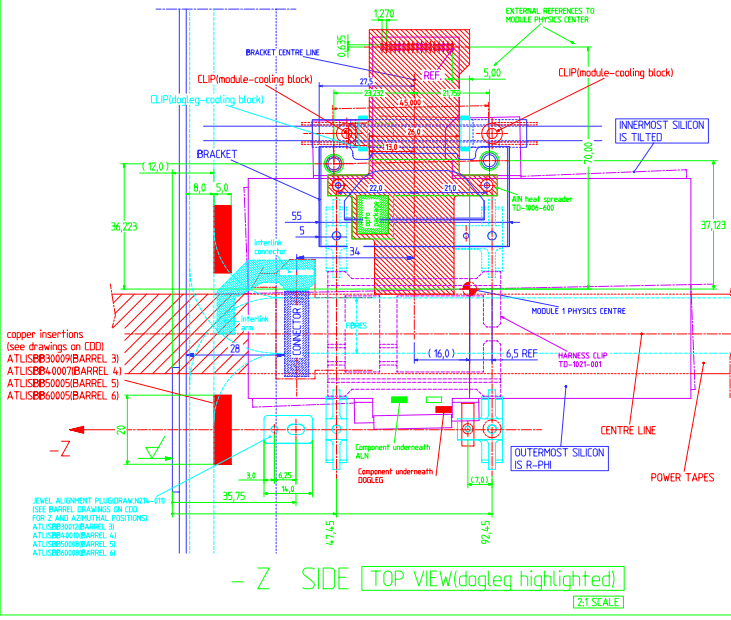
CERN DRAWING NUMBER : ATLASBB30020

PREL. DATE	TRAVAIL	NOMBRE DE DESSIN	DENOMINATION/LOCAL TEST/STOKES	REMARQUES
PREL 1	11/02	1	ATLAS SCT BARREL	4.4
PREL 2	09/02	1		0.9

MOD. ARRANGEMENT B3-BARREL ENDS (TACTIC ACTIVE 299.5mm) [CERN]



- MODULE SEPARATION :2.8mm
- TILT ANGLE:1°
- ACTIVE RADIUS:371mm
- (1) HARNES AT END OF BARREL
- HEIGHT OF THE STACK:6.15mm
- 6 pairs LMTs=197mm
- interface PCB=0.5mm
- Connector=3.45mm
- width of connector=24.662mm
- solder :0.03mm
- strap effect:0.2mm
- (2) OPTO-PACKAGE UNDER MODULE
- ALN =0.5mm
- Thermally conductive glue =0.1mm
- Dogleg(reigion Opto-package)=0.34mm
- Opto-package and chip cover on dogleg including glue:1.6mm



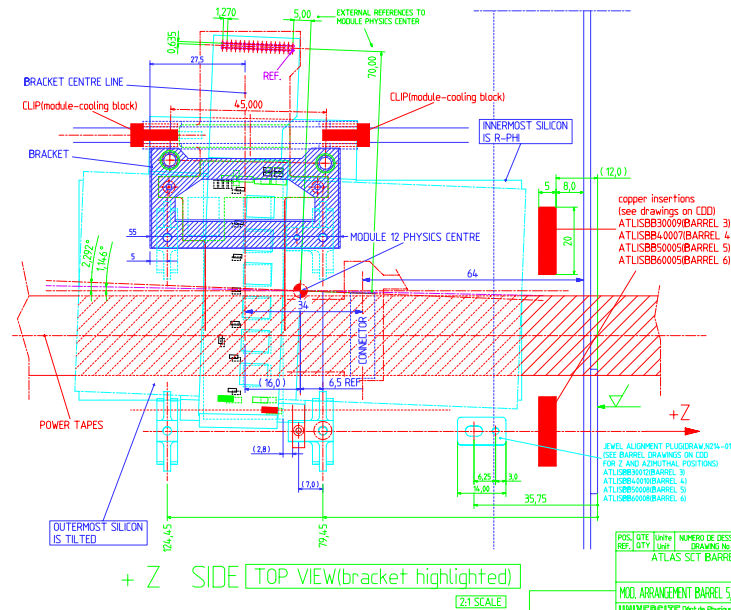
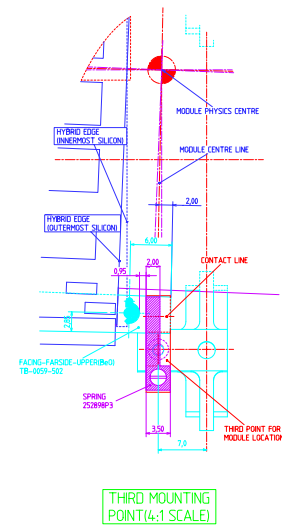
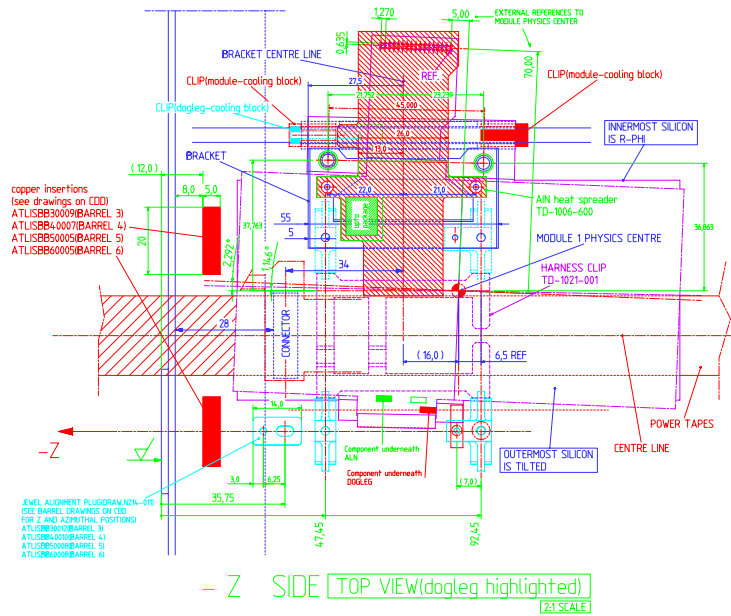
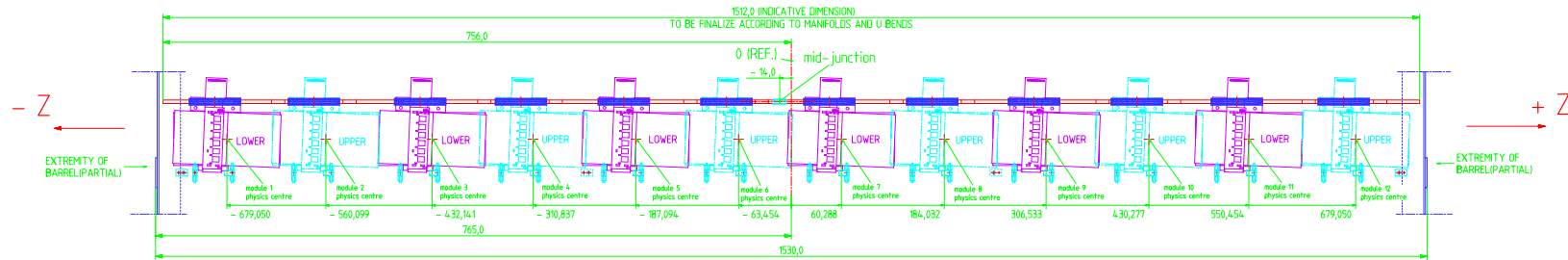
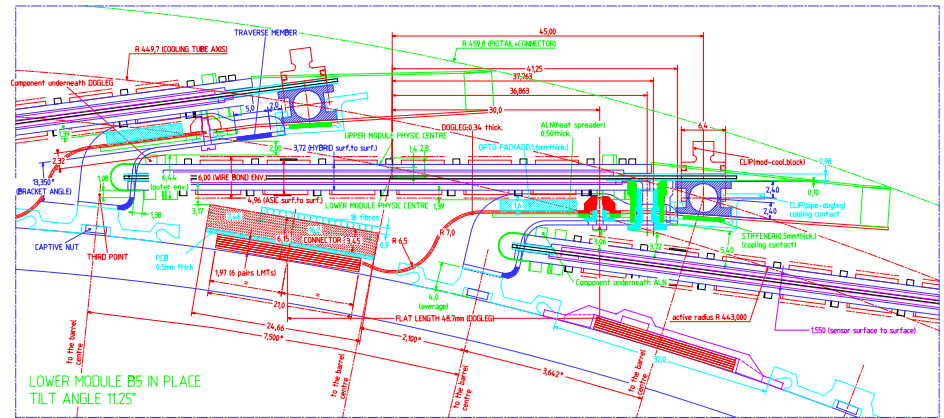
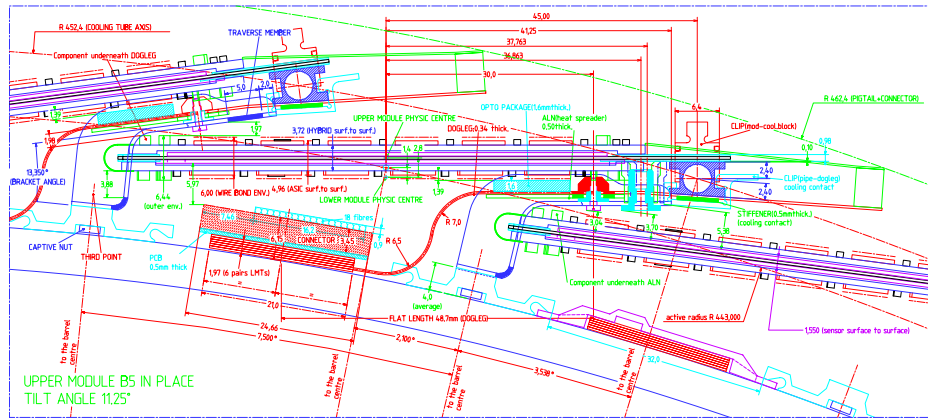
PREL. DATE	TRAVEL	NUMERO DE DESSIN	DESIGNATION	REVISIONS	REMARKS
			ATLAS SCT BARREL		

MOD. ARRANGEMENT BARREL 4 (CLEARANCES BARREL ENDS INCLUDED)
 UNIVERSITE DE GENEVE, Dept de Physique Nucleaire et Corpusculaire
 CH. L. LANGEVIN 511 Genéve 4, Suisse
 TEL: 022 233 7300 FAX: 022 233 7319

- Z SIDE TOP VIEW (dogleg highlighted) 2:1 SCALE

THIRD MOUNTING POINT (4:1 SCALE)

+ Z SIDE TOP VIEW (bracket highlighted) 2:1 SCALE



- TILT ANGLE: 11.25°
- MODULE SEPARATION: 2.8mm
- ACTIVE RADIUS: 4.3mm
(Harness at end of barrel)

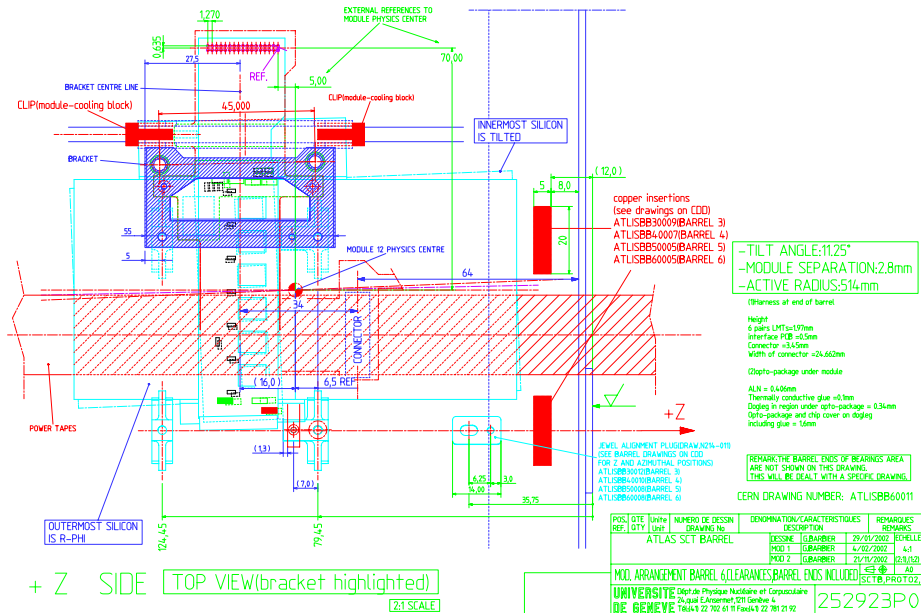
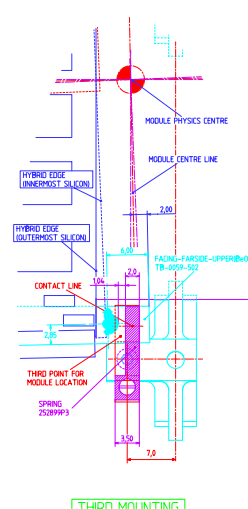
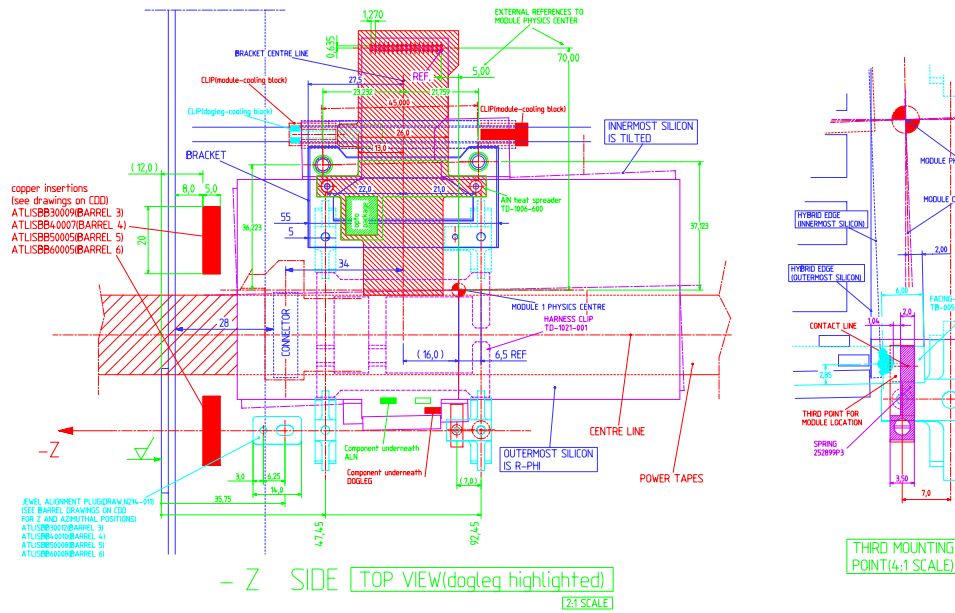
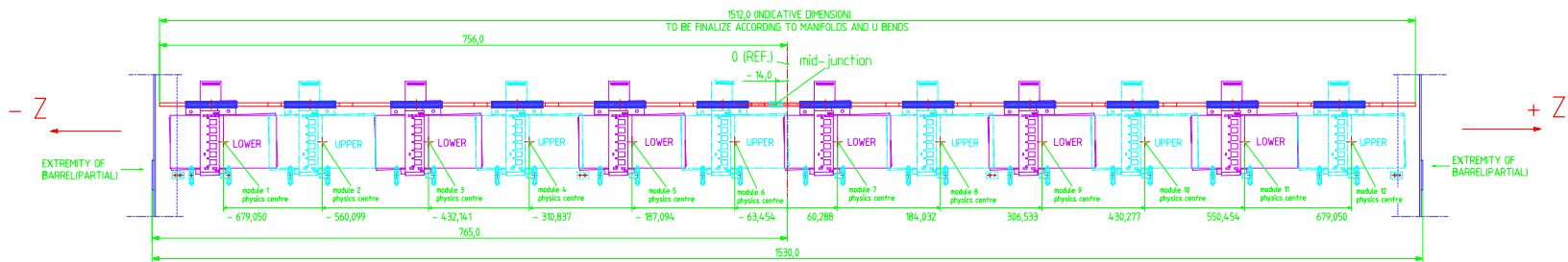
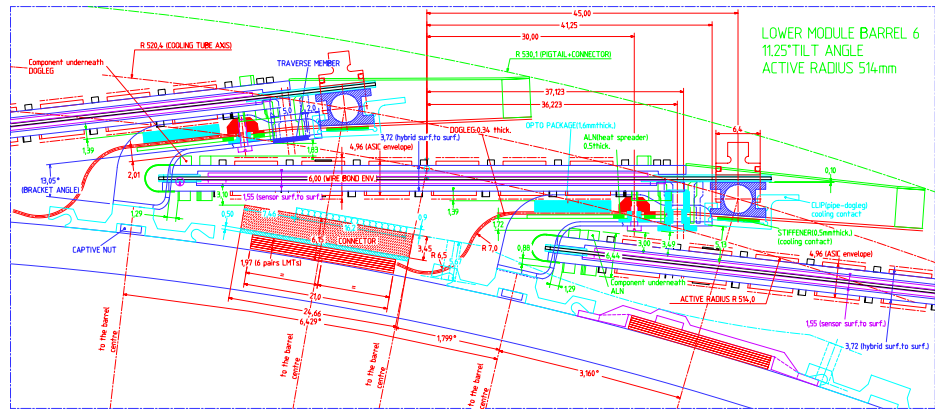
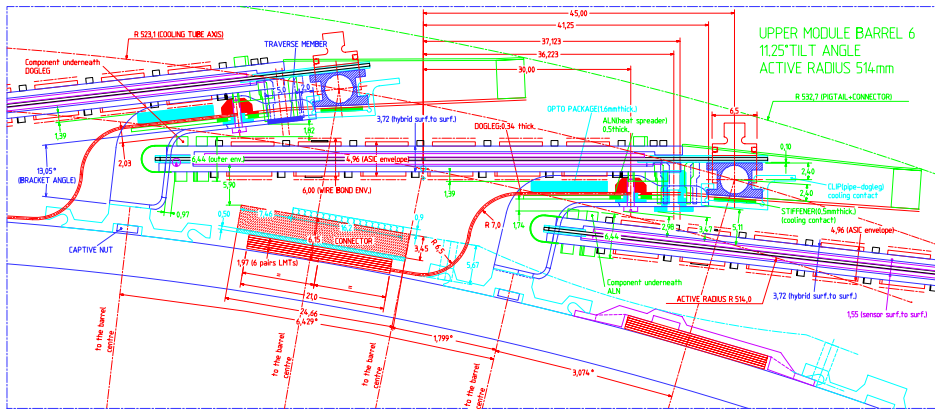
Height: 6 pins LHTs: 1.07mm
Offset face PCB: 0.5mm
Connector: $\pm 0.55mm$
Width of connector: $\pm 0.62mm$
Opto-package under module
ALN = 0.45mm
Thermally conductive glue: $\approx 0.1mm$
Dogleg in region under opto-package = 0.34mm
Opto-package and clip cover on dogleg
Soldering glue = 1mm

CERN DRAWING NUMBER: ATLSBB5000

PROJ. QTY	REV.	DATE	BY	UNIV.	NUMERO DE DESSIN	DESCRIPTIOIN	DEPARTAMENTO/CHARACTERISTICOES	REVISIONES	REMARKS
					ATLAS SCT BARREL				

MOD. ARRANGEMENT BARREL 5 CLEARANCES BARREL ENDS INCLUDED

UNIVERSITE DE GENEVE
252925P0



PROJ. QTY	REV.	DATE	NUMBER DE. DESIGN	DESCRIPTION	CARACTERISTIKES	REMARKS
1	1	29/01/2002	10466	ATLAS SCT BARREL	DESIGN	
1	2	14/02/2002	10466		DESIGN	
1	3	21/11/2002	10466		DESIGN	

MOD. ARRANGEMENT BARREL 6 (CLEARANCE BARREL ENDS INCLUDED)

UNIVERSITE DE Physique Nucleaire et Cosmologique
24, av. L. Langevin 91190 Gif sur Yvette
DE. GEWIEVE

252923P0