

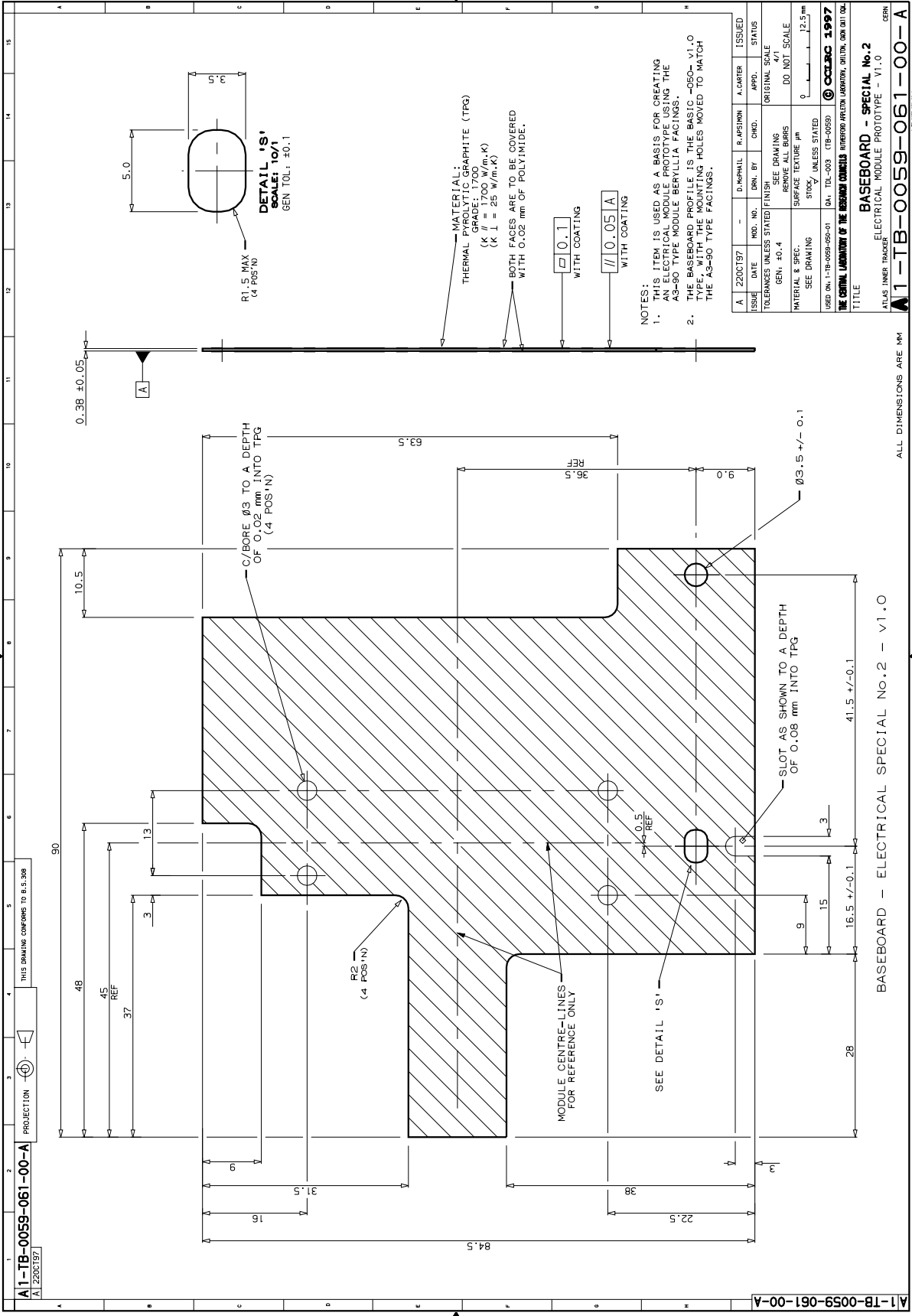
A1-TB-0059-051-00-A  
 14 OCT 197

PROJECTION  
 THIS DRAWING CONFORMS TO B.S.308

A	14 OCT 197		D. HEMMILL	R. J. SIMMON	A. CARTER	ISSUED
ISSUE DATE	MRD. NO.	DRN. BY	CHKD.	APPR.	STATUS	
TOLERANCES UNLESS STATED FINISH						
GEN. ±0.4						
SEE DRAWING						
RESERVE ALL DIMS						
SURFACE FINISH						
SEE DRAWING						
STOCK UNLESS STATED						
12.5mm						
0						
DO NOT SCALE						
ORIGINAL SCALE						
4/1						
© OCLJBC 1997						
USED ON: 1-TB-0059-050-01 (A), TEL-003 (TB-0059)						
THE ORIGINAL LOCATION OF THE RESEARCH COUNCIL'S RESEARCH AND DEVELOPMENT DIVISION, OXFORD, OX4 0DQ, UK						
TITLE						
BASEBOARD - SPECIAL No. 1						
THERMAL MODULE PROTOTYPE - V1.0						
GEN						

ALL DIMENSIONS ARE MM

A1-TB-0059-051-00-A  
 GEN



A1-TB-0059-061-00-A  
 A 2200T97  
 PROJECTION  
 THIS DRAWING CONFORMS TO B.S.308

BASEBOARD - ELECTRICAL SPECIAL NO.2 - V1.0  
 ALL DIMENSIONS ARE MM

A1-TB-0059-061-00-A  
 A 2200T97



R1.5 MAX  
 (4 POS'N)  
**DETAIL 'S'**  
 GEN TOL: ±0.1

MATERIAL:  
 THERMAL PYROLYTIC GRAPHITE (TPG)  
 GRADE: 1700  
 (K // = 1700 W/m.K)  
 (K ⊥ = 25 W/m.K)

BOTH FACES ARE TO BE COVERED  
 WITH 0.02 mm OF POLYIMIDE.

0.1  
 WITH COATING

// 0.05 A  
 WITH COATING

NOTES:  
 1. THIS ITEM IS USED AS A BASIS FOR CREATING  
 AN ELECTRICAL MODULE PROTOTYPE USING THE  
 AS-80 TYPE MODULE BERYLLIA FACINGS.  
 2. THE BASEBOARD PROFILE IS THE BASIC -V1.0  
 WITH THE DRILLING HOLES MOVED TO MATCH  
 THE AS-80 TYPE FACINGS.

ISSUE	DATE	MRD. NO.	D. INITIAL	R. POSITION	A. CARTER	ISSUED
A	2200T97					

TOLERANCES UNLESS STATED FINISH  
 GEN. ±0.4  
 SURFACE ALL DIMS  
 SURFACE TEXTURE μm  
 SEE DRAWING  
 UNLESS STATED

SCALE  
 ORIGINAL SCALE  
 DO NOT SCALE

© COLTRAC 1997  
 THE ORIGINAL LANGUAGE OF THE DRAWING IS ENGLISH  
 UNLESS OTHERWISE SPECIFIED

BASEBOARD - SPECIAL No.2  
 ELECTRICAL MODULE PROTOTYPE - V1.0  
 GEN

A1-TB-0059-061-00-A

9/14/00 10:08:52 AM -01:57