

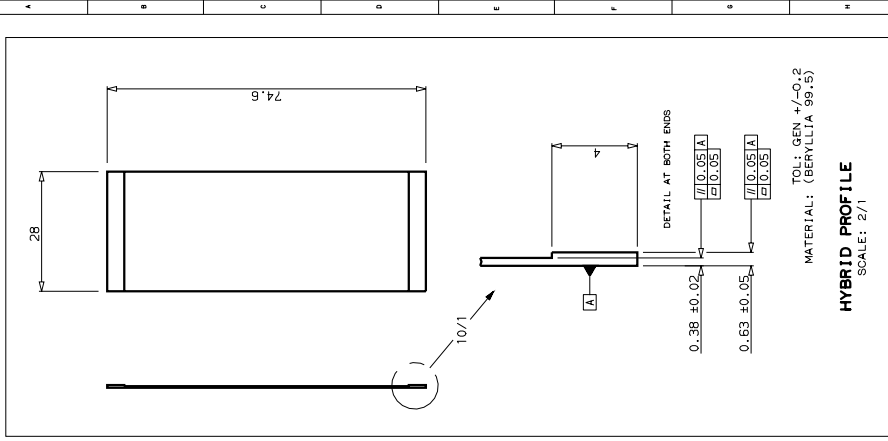
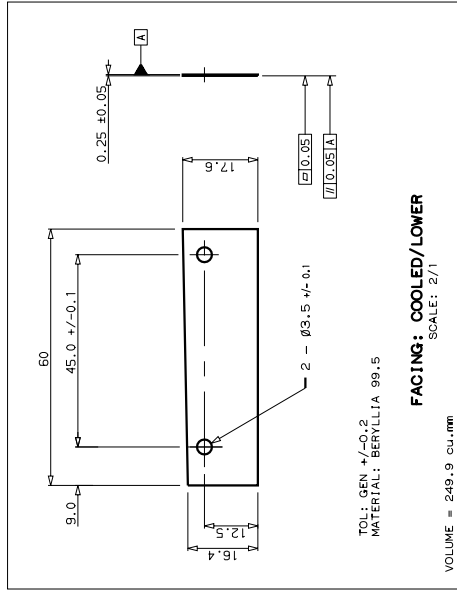
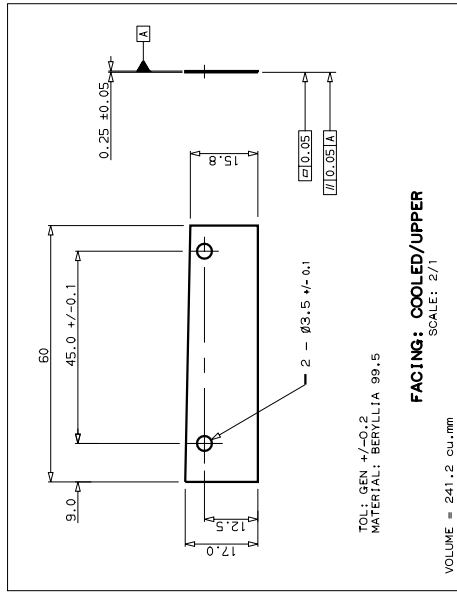
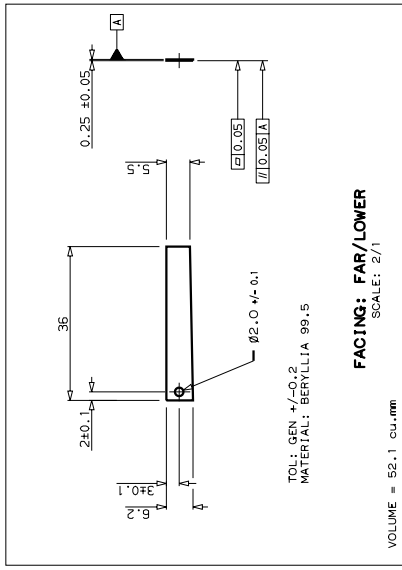
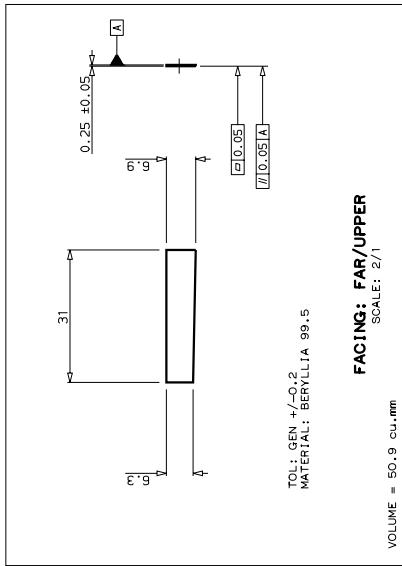
A1-TB-0059-050-03-B

A: 22061997
B: 10NOV97

PROJECTION



THIS DRAWING CONFORMS TO E.S. 308

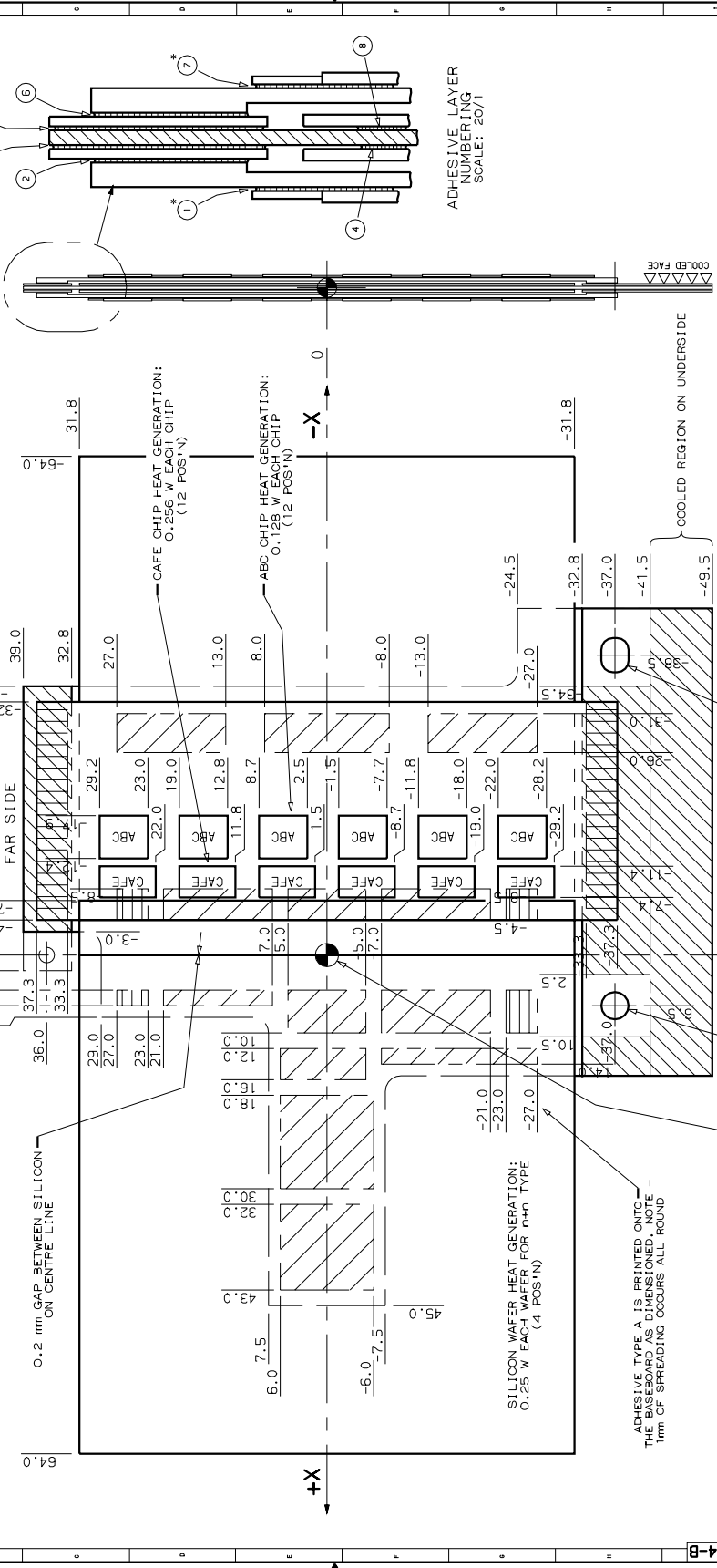
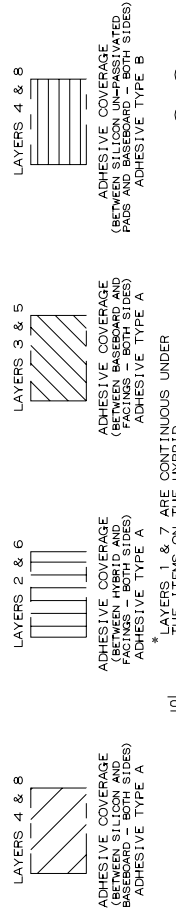


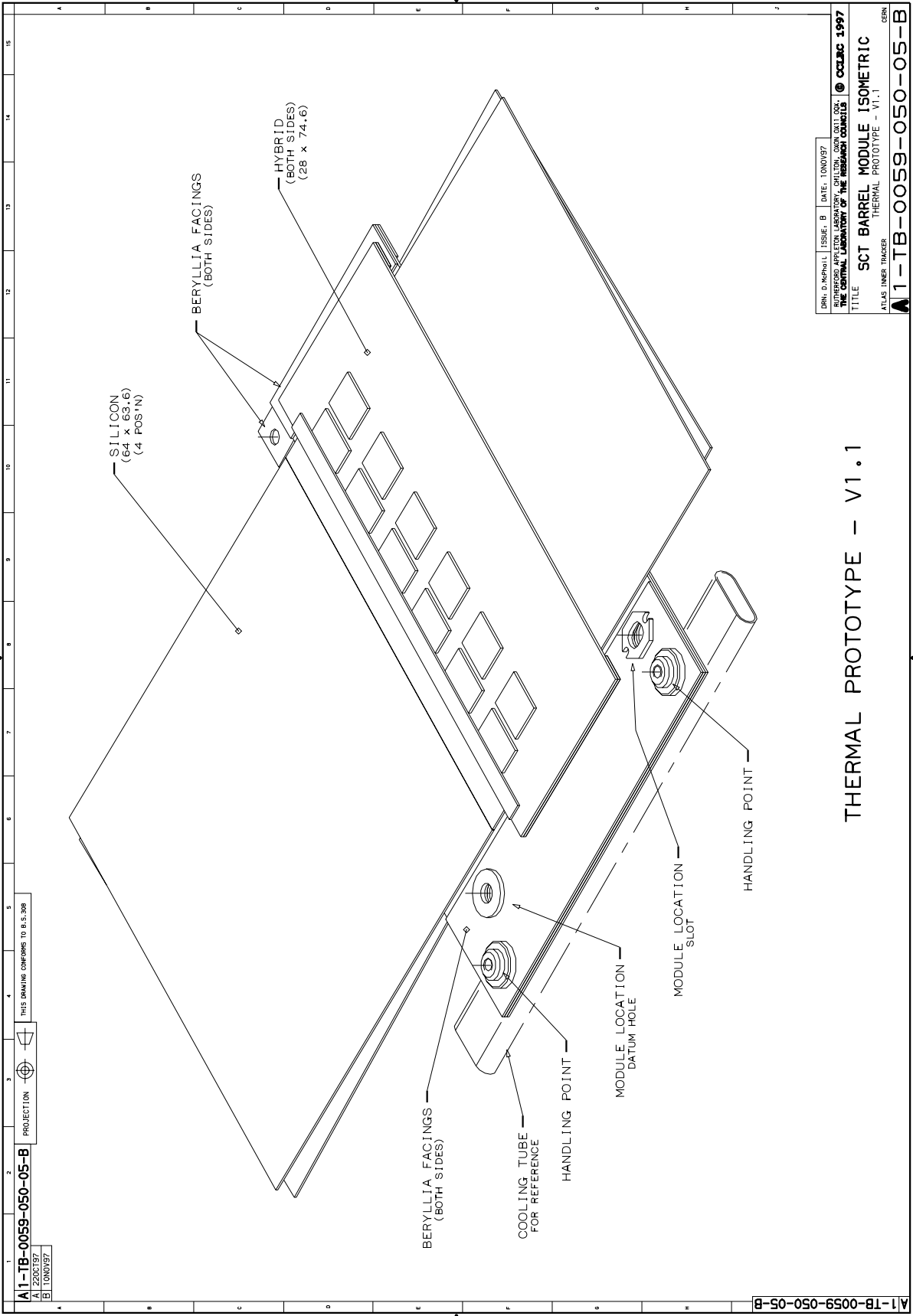
B	10NOV97	-	D. NEPMAL	R. APESHON	G. TAPPEN	ISSUED
ISSUE	DATE	MOD. NO.	DRN. BY	CHKD.	APPR.	STATUS
TOLERANCES UNLESS STATED			FINISH	SEE DRAWING	ORIGINAL SCALE	2/1
MATERIAL & SPEC.			SEE DRAWING	REMOVE ALL BURRS	DD. NOT SCALE	
SURFACE TEXTURE			µm	0	25	mm
STOCK/ UNLESS STATED						
USED DRN.	-	04: 10L-005	(18-0659)			© CCLC INC 1997
THE CENTRAL LABORATORY OF THE RESISTOR CONSOLIDATORS AND THE UNIVERSITY OF BRISTOL, BRISTOL, ENGLAND						
TITLE						
MODULE COMPONENTS						
THERMAL MODULE PROTOTYPE - V1.1						
ATLAS INNER TRACKER						
A1-TB-0059-050-03-B						
CERN						

ALL DIMENSIONS ARE MM

ADHESIVE TYPE A:
 2011 THERMAL EPOXY ADHESIVE
 FROM MGT/STB
 FOR DETAILS SEE MGT/STB
 TYPICAL THICKNESS: 0.075 mm
 THERMAL CONDUCTIVITY (K) = 0.5 W/m.K

ADHESIVE TYPE B:
 ELECTRICALLY CONDUCTIVE
 SILICON PAD FROM MGT/STB
 TYPICAL THICKNESS: 0.08 mm
 THERMAL CONDUCTIVITY (K) = 1.0 W/m.K



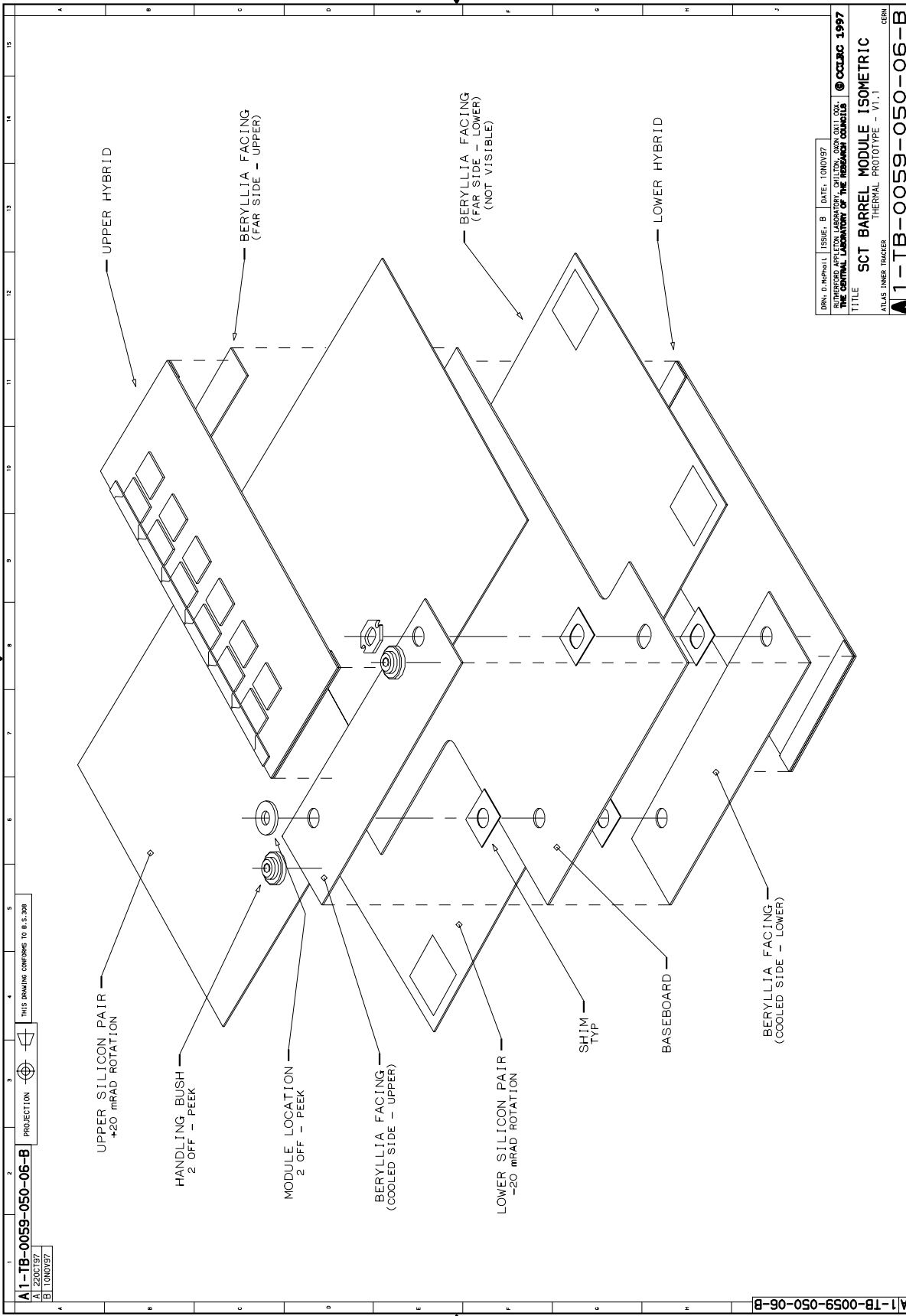


A1-TB-0059-050-05-B
 A 22NOV87
 B 10NOV87
 PROJECTION
 THIS DRAWING CONFORMS TO B.S.308

DRN. D. McPHO.L. ISSUE: B DATE: 10NOV87
 RUTHERFORD APPLETON LABORATORY, CHILTON, OXON OX11 0QX.
 THE CENTRAL LABORATORY OF THE RESEARCH COUNCILS © CCLRC 1997
 TITLE SCT BARREL MODULE ISOMETRIC
 ATLAS INNER TRACKER THERMAL PROTOTYPE - V1.1
 GENR A1-TB-0059-050-05-B
 SHEET 5 OF 6

THERMAL PROTOTYPE - V1.1

94470005 1A/0.011.01-001-97



A1-TB-0059-050-06-B
 A 230192Z
 B 10NOV97

PROJECTION
 THIS DRAWING CONFORMS TO E.S. 308

DRN D. McNeil | ISSUE: B | DATE: 10NOV97
 RUTHERFORD APPLIED LABORATORY, CHILTON, OAK OAK COX
 THE CENTRAL LABORATORY OF THE RESEARCH COUNCIL © CCLRC 1997

TITLE
 SCT BARREL MODULE ISOMETRIC
 ATLAS INNER TRACKER
 THERMAL PROTOTYPE - VI.1
 CERN

A1-TB-0059-050-06-B
 SHEET 6 OF 6

d:\m4\FK1357A:16:27:00:24-OCT-97