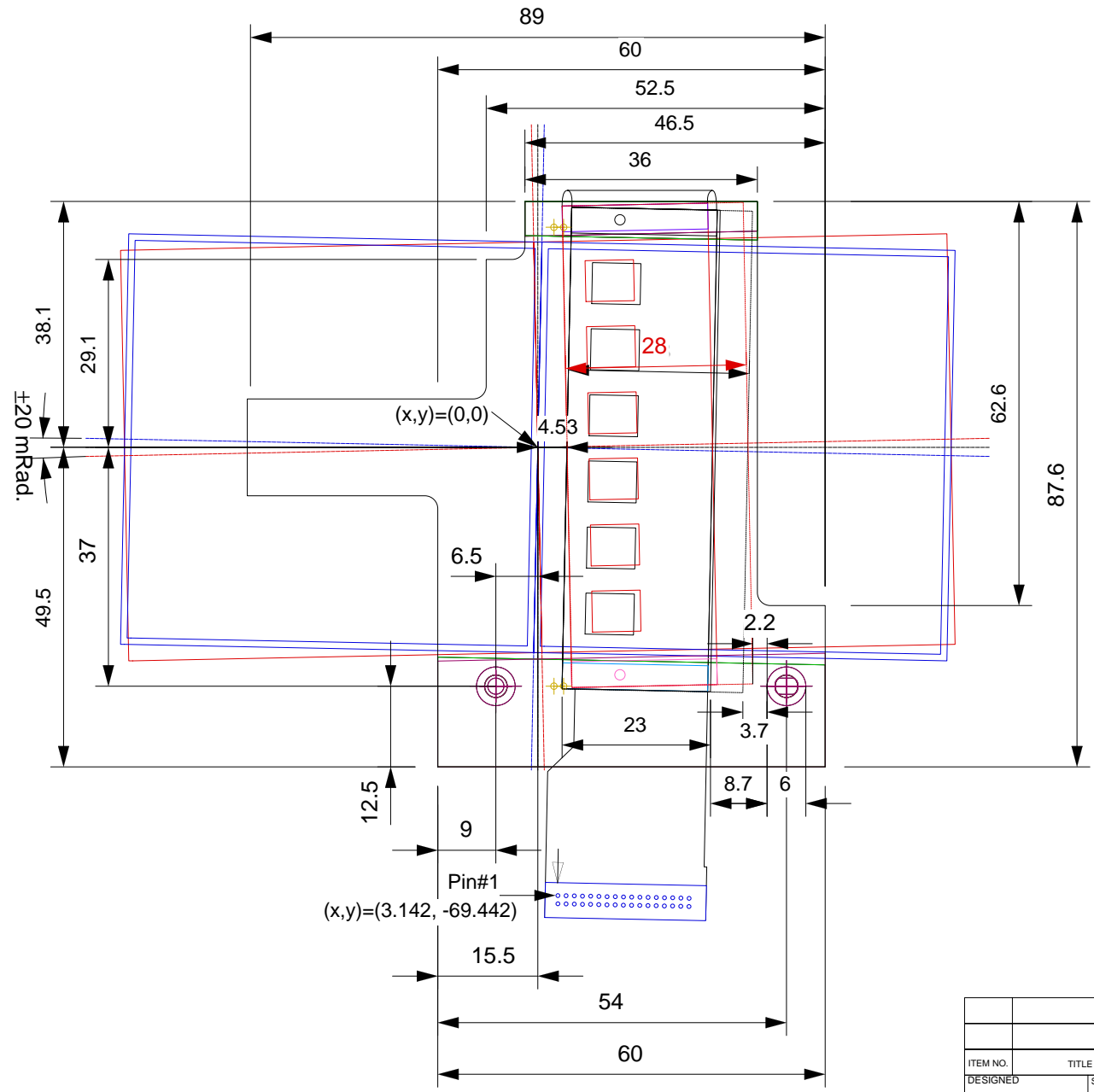
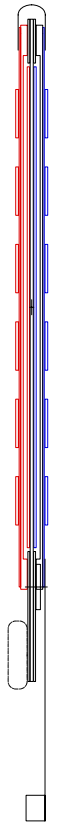
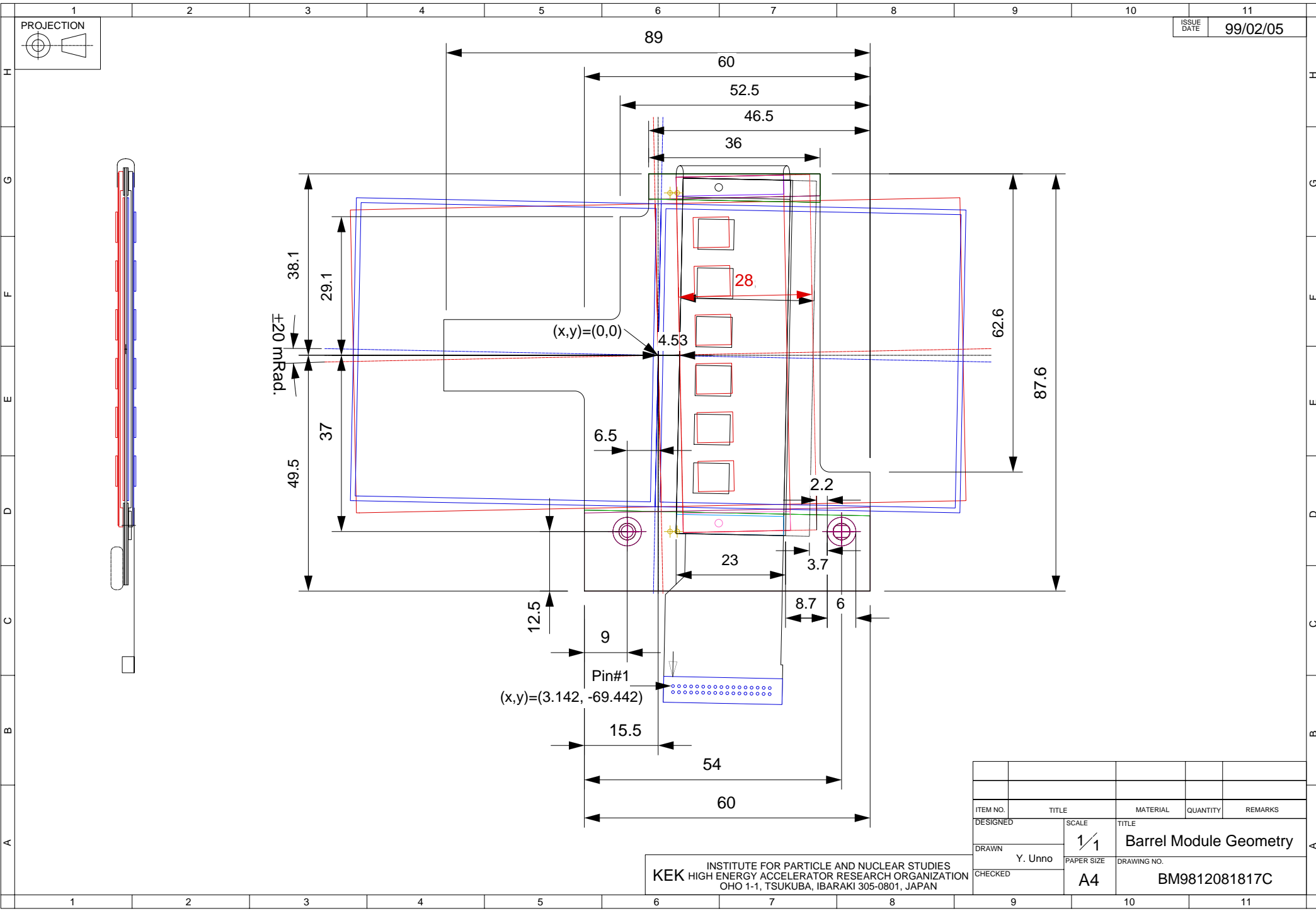


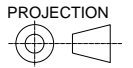
ISSUE DATE 99/02/05



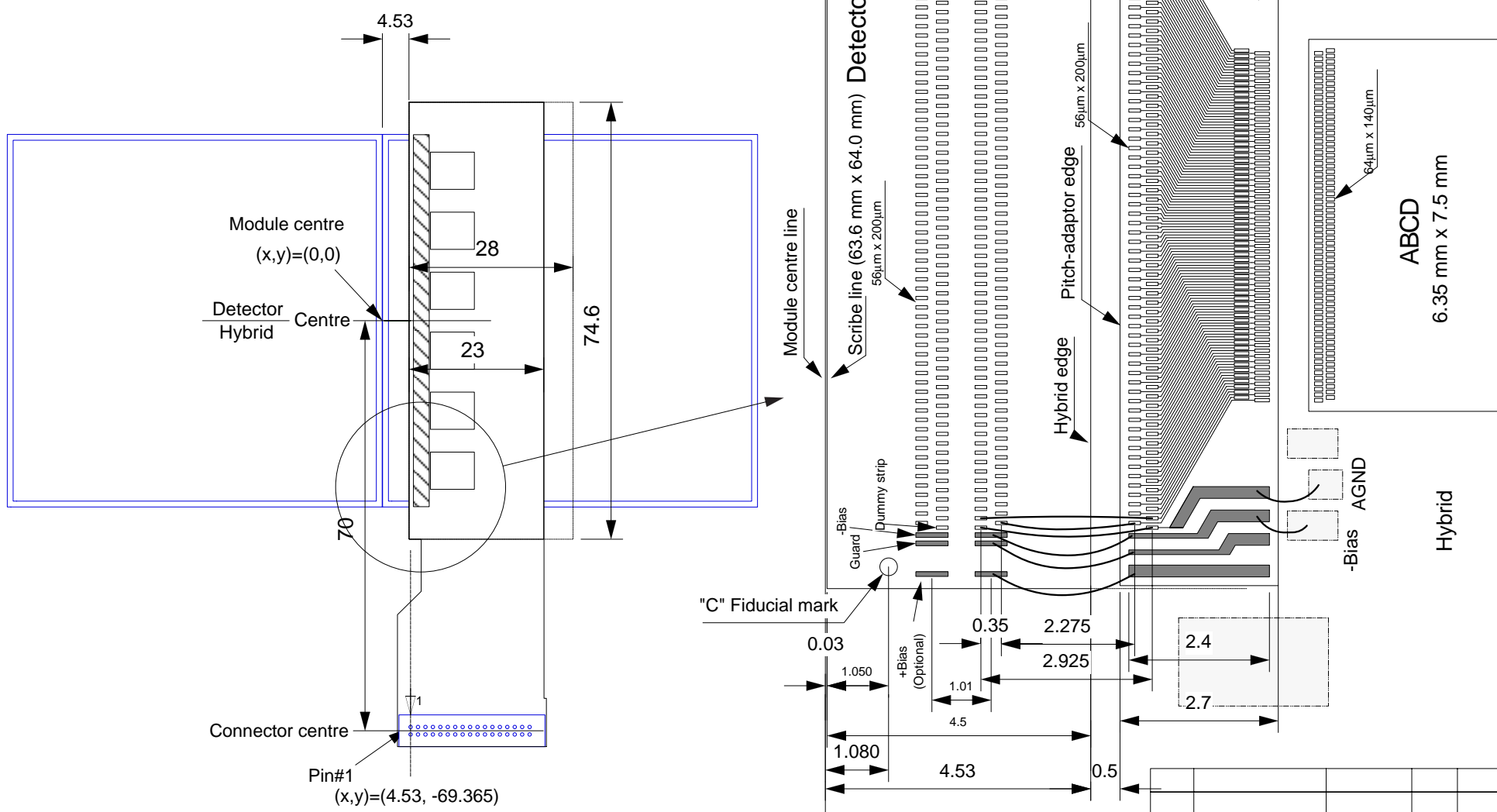
ITEM NO.	TITLE	MATERIAL	QUANTITY	REMARKS
DESIGNED	SCALE	TITLE		
DRAWN	1/1	Barrel Module Geometry		
CHECKED	PAPER SIZE	DRAWING NO.		
	A4	BM9812081817C		

INSTITUTE FOR PARTICLE AND NUCLEAR STUDIES
 KEK HIGH ENERGY ACCELERATOR RESEARCH ORGANIZATION
 OHO 1-1, TSUKUBA, IBARAKI 305-0801, JAPAN





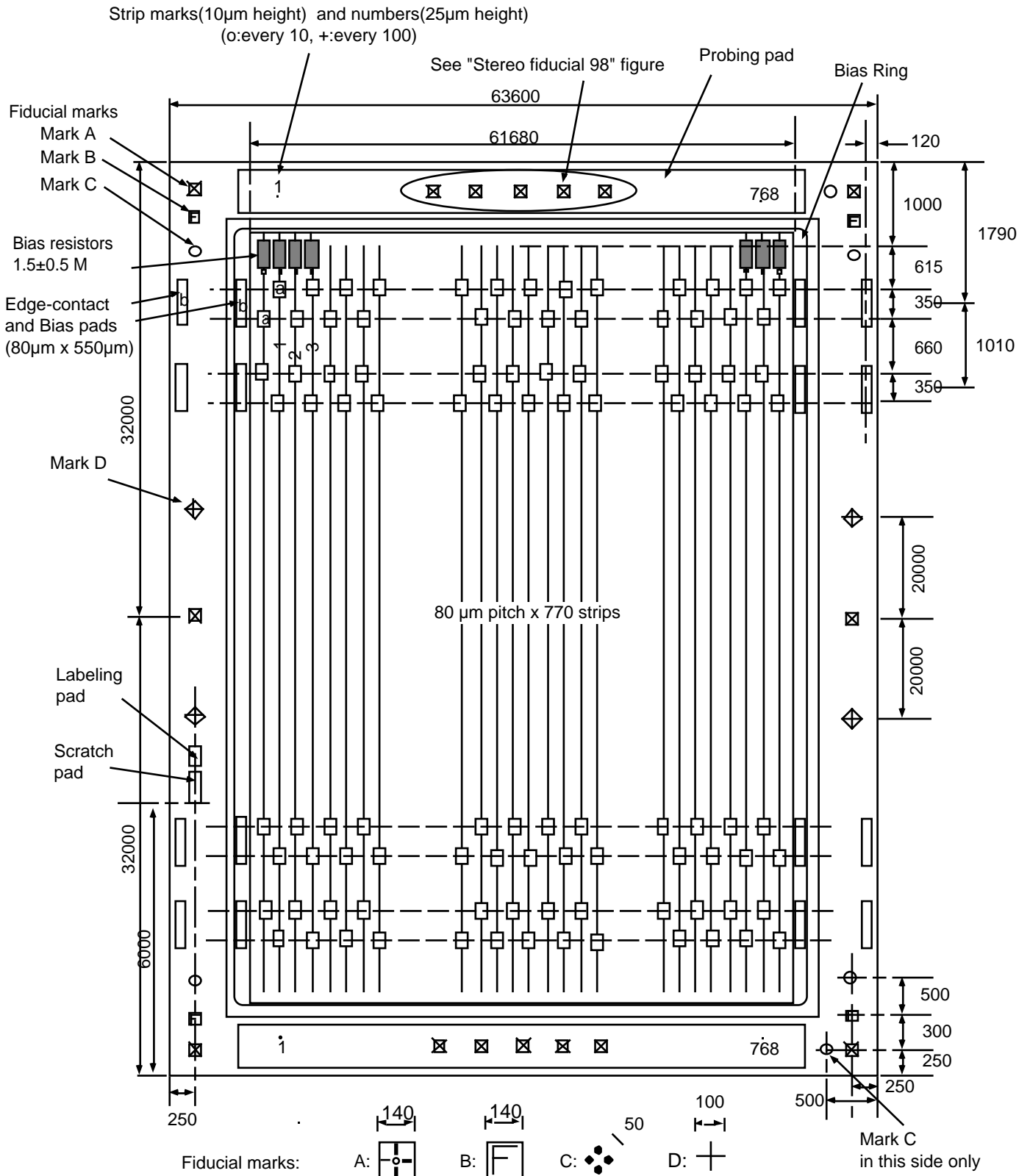
ISSUE DATE 98/12/21



Unit: mm

ITEM NO.	TITLE	MATERIAL	QUANTITY	REMARKS
DESIGNED	Y. Unno	SCALE		TITLE
DRAWN	T. Kohriki	PAPER SIZE		Detector-Hybrid alignment
CHECKED		DRAWING NO.		BM9812082353B
		A4		

KEK INSTITUTE FOR PARTICLE AND NUCLEAR STUDIES
 HIGH ENERGY ACCELERATOR RESEARCH ORGANIZATION
 OHO 1-1, TSUKUBA, IBARAKI 305-0801, JAPAN



Notes:

(Not to Scale) [Unit: μ m]

- (1) Pads: a = 56 μ m x 200 μ m, b = 80 μ m x 550 μ m
- (2) Fiducial mark C along the edge of strip direction is put in the right side only
- (3) Fiducial marks A & B are "metal-in-opening or frame"
- (4) Fiducial marks C & D are either "hole-in-metal" or "metal-in-(wide)opening"
- (5) Labeling pad: "ATLAS98xxx", 3 characters xxx for the vendor name
- (6) Scratch pad: 1 x 24 pads for Detector numbering
- (7) Outer dimension: "cutting line of scribe to cutting line of scribe"