

Barrel Module Geometry (Draft)

Y. Unno

- **Overall module geometry**
 - Drawing: BM9812081817E
 - Expanded view of the crosssection
 - List typical thicknesses
- **Detector-Hybrid geometry**
 - Drawing: BM9812082353E
 - Detector dimension: rewritten with finished size

Overall module geometry

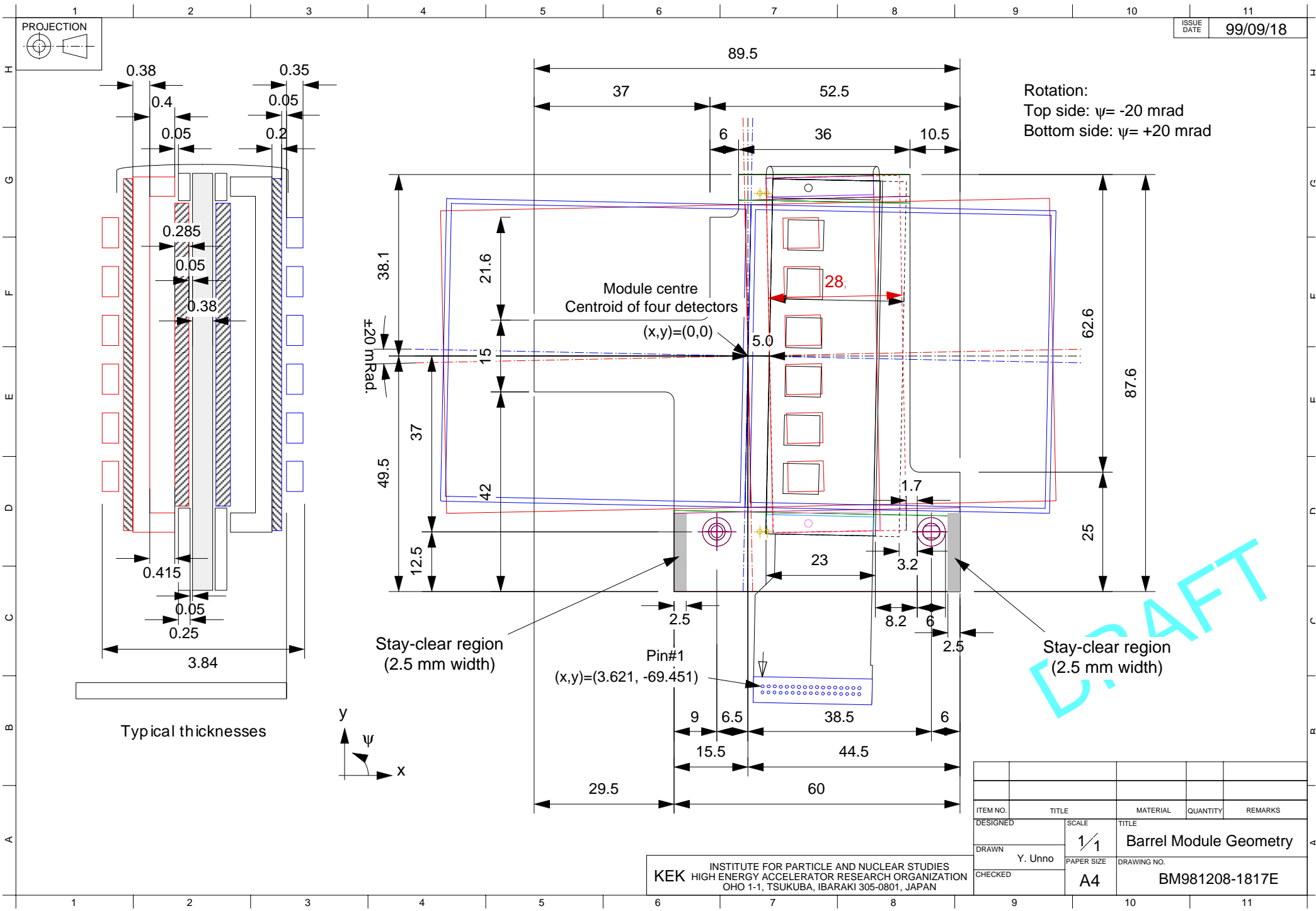
Revision history

- **99/9/18 - BM9812081817E**
 - Expanded view of the cross-section
 - List typical thicknesses
- **99/6/2 - BM9812081817D**
 - Distance from the module centre to the hybrid edge: 5.0 mm
 - Gap between the detectors (finish): 130 μm
- **99/3/5 - BM9812081817C**
 - Introduced to the SCT community

Detector-Hybrid geometry

Revision history

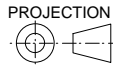
- **99/9/18 - BM9812082353E**
 - Detector dimension: rewritten with finished size
- **99/6/2 - BM9812082353D**
 - Distance from the module centre to the hybrid edge: 5.0 mm
 - Gap between the detectors (finish): 130 μm
- **99/3/5 - BM9812082353C**
 - Introduced to the community



DRAFT

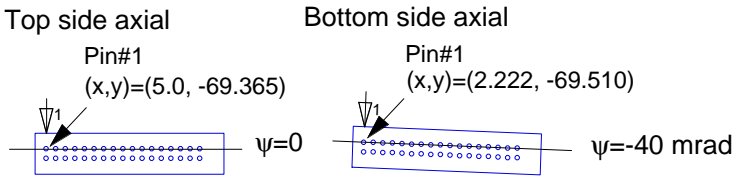
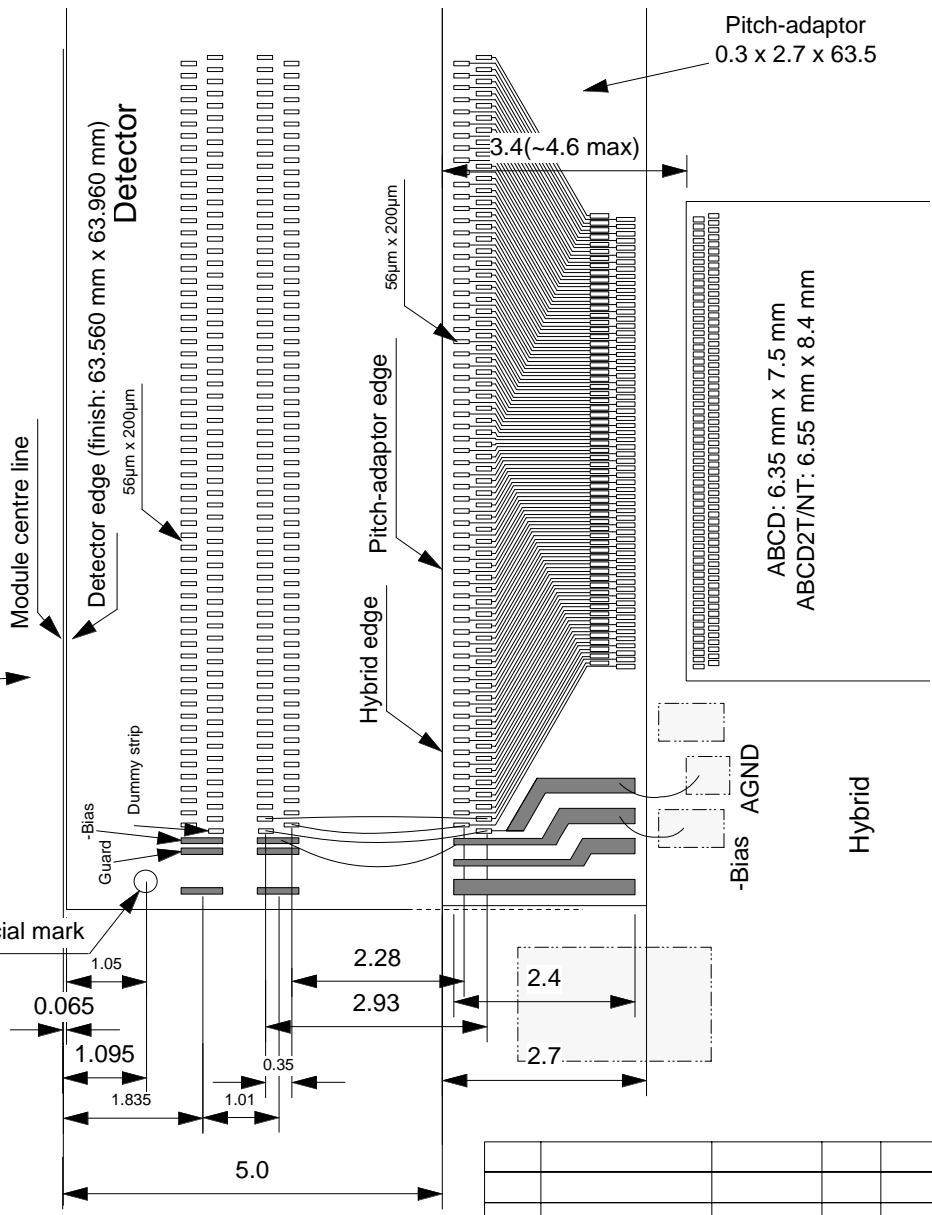
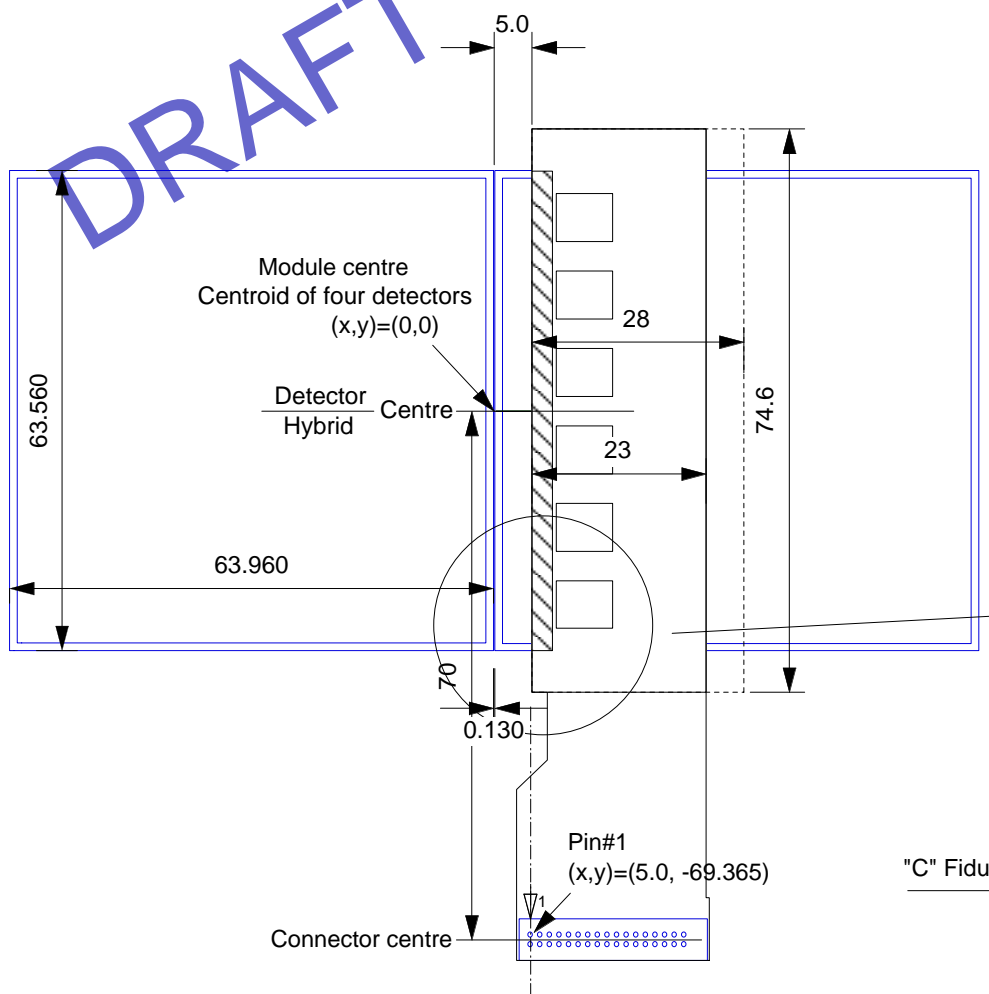
ITEM NO.	TITLE	MATERIAL	QUANTITY	REMARKS
DESIGNED	SCALE	TITLE		
DRAWN	1/1	Barrel Module Geometry		
CHECKED	PAPER SIZE	DRAWING NO.		
	A4	BM981208-1817E		

INSTITUTE FOR PARTICLE AND NUCLEAR STUDIES
 KEK HIGH ENERGY ACCELERATOR RESEARCH ORGANIZATION
 OHO 1-1, TSUKUBA, IBARAKI 305-0801, JAPAN



DRAFT

Note: Detector size based on Scribe line



Connector locations in the "module coordinate"

Unit: mm

ITEM NO.	TITLE	MATERIAL	QUANTITY	REMARKS
DESIGNED	Y. Unno	SCALE		
DRAWN	Y. Unno	PAPER SIZE	A4	Detector-Hybrid alignment
CHECKED		DRAWING NO.	BM981208-2353E	

KEK INSTITUTE FOR PARTICLE AND NUCLEAR STUDIES
HIGH ENERGY ACCELERATOR RESEARCH ORGANIZATION
OHO 1-1, TSUKUBA, IBARAKI 305-0801, JAPAN